

BOLZANO BOZEN WINERIES

1	KELLERER BOZEN - CANTINA BOLZANO	A
Headquarters and winery - Established in 2001 Neighbourhood: San Maurizio, Bolzano		
Discovering Bolzano and its wines would not be complete without visiting the winery's brand-new headquarters: a symbolic marriage of traditions and evolution. A green building where wine is produced, put on display, and tasted. Back in 1908, 30 local farmers established a wine cooperative in the Gries neighbourhood. They were soon joined by a further 18 winegrowers from Santa Maddalena hill. Today, 224 families collaborate to produce high-quality, traditional wine.		
Total production: 3,200,000 bottles/year Lagrein: 520,000 bottles S. Maddalena: 715,000 bottles Vineyards: 340 hectares Store: Vinarius Wineshop from Monday to Saturday between 9:30 and 18:30 Bus: 10A, next to the winery		
Kellerei Bozen - Cantina Bolzano Via San Maurizio 36 Tel. +39 0471 272099 info@kellereibozen.com www.kellereibozen.com		

2	REYTER	A
Winery and estate - Established in 1988 Neighbourhood: Gries, Bolzano		

One of the most recent wine estates in the city, it is surrounded by vineyards that make up the "Lagrein island" in the Gries neighbourhood. The Unterhofer family has always been passionate about wine and has focused on organic viticulture since 1996. A limited, yet ever-so precious yield, these bottles are difficult to find other than at the winery. A precious half hectare in the heart of the Lagrein's vineyards.

Total production: 13,000/15,000 bottles/year
Lagrein 3,000/4,000 bottles, Lagrein rosé 2,000 bottles
Schiava 6,000 bottles
Vineyards: 3 hectares
Store: The new winery will open for tastings in autumn 2020. Currently only booked tours are accepted.
Bus: 10A, get off after Piazza Gries

	Reyter Unterhofer Christoph Via Eisenkehl 14/B Bolzano	
	Mobile +39 333 320781 Tel. +39 0471 273568 info@reyter.it	
	www.reyter.it	

3	MURI-GRIES	A C
Winery and estate - Established in 1845 Neighbourhood: Gries, Bolzano		

The Muri-Gries winery and the convent belonging to the Benedictine monks is unique. The abbey has a good three vineyards within its walls which yield the prestigious Lagrein Riserva Abtei Muri'. Their Lagrein made this local vine famous all over the world.

Total production: 650,000 bottles/year
Lagrein 258,000 bottles, S. Maddalena 35,000 bottles
Vineyards: 60 hectares, 2/3 of which belong to the estate
Store: from Monday to Friday between 8:00 and 12:00 and 14:00 and 18:00
Bus: 10A, 201, 132, get off at the church of Gries

	Muri-Gries Estate Abby Piazza Gries 21 Bolzano	
	Tel. +39 0471 282287 info@muri-gries.com	
	www.muri-gries.com	

4	SCHMID OBERRAUTNER	A C
Winery and estate - Established in 1363 Neighbourhood: Gries, Bolzano		

Via Fago is one of the city's original outer ring roads leaving from Piazza Gries. In the past it included some of the most important Lagrein vineyards. The Schmid Oberrautner estate can be found on the street. The winery has made tastings into an art over the course of the decades in this neighbourhood. A good 21 generations of winegrowers have worked in these halls, and the estate still preserves its original charm. The wines age in old wooden casks and new stainless-steel tanks in the underground cellars, two levels below the street's surface.

Total production: 80,000 bottles/year
Lagrein 40,000 bottles S. Maddalena 10,000 bottles
Vineyards: 9 hectares
Store: from Monday to Friday between 10:00 and 12:00 and 14:00 and 18:00, Saturdays bookings only
From June 2020 the holiday farm will accept bookings.
Bus: 1 get off at Via M. Pacher (in front of the newsagent), from here, 2 min. on foot

	Schmid Oberrautner Via Michael Pacher 3 Bolzano	
	Tel. +39 0471 28140 info@schmid.bz	
	www.schmid.bz	

5	STREKKER	C
Winery and farmstead - Established in 2019 Neighbourhood: Gries, Bolzano		

The youngest winery in the municipality of Bolzano. The 2019 harvest was the first one ever as the 'Strekker farmstead'. They always tinkered in their small wine store, the 'Vinzig' (German for 'tiny') and those experiments pushed the young Veit family to bring their two Bolzano wines and their unmistakable style to a larger audience.

Total production: 4,000 bottles/year
Lagrein 1,500 bottles, S. Maddalena 1,500 bottles
Vineyards: 3,5 hectares
Store: from Friday to Saturday between March and June and from the end of August to the end of October at the Vinzig wine store from 11:00 until sunset
Bus: 156 or on foot to the end of the Guncina walk; at the main road you will see Via Cologna just 10 m to the left which will take you to your destination

	Strekker Via Cologna 13 Bolzano	
	Mobile +39 348 4964951 www.strekker.it	

6	EGGER RAMER	A F
Winery and estate - Established in 1880 Neighbourhood: Gries, Bolzano		

The Egger-Ramer farming and wine estate has been known as a Lagrein symbol in Gries for quite some time.

Total production: 120,000 bottles/year
Lagrein 30,000 bottles
S. Maddalena 20,000 bottles
Vineyards: 10 hectares
Store: from Monday to Friday between 8:30 and 12:30 and 14:30 and 18:30, Saturdays between 10:00 and 13:00
Guided tours by appointment
Bus: 8, get off Via Cadorna and walk for 3 minutes on foot

	Egger-Ramer Via Guncina 5 Bolzano	
	Tel. +39 0471 280541 info@egger-ramer.com	
	www.egger-ramer.com	

7	THURNHOF	E
Estate and winery - Established in approx. 1860 Neighbourhood: Oltrisarco, Bolzano		

The Thurnhof estate is located at the foot of the Virgolo and faces south. It was built in 1175. Following WWI and the bombings, a modern city grew around it but this did not impact traditional viticulture.

The Thurnhof is this neighbourhood's pride and joy.

Total production: 25,000 bottles/year
Lagrein 8,000 bottles, S. Maddalena 4,000 bottles
Vineyards: 4 hectares
Store: from Monday to Friday between 8:30 and 19:00, Saturdays between 8:00 and 13:00
Guided tours by appointment

	Thurnhof Via Castel Flavon 7 Bolzano	
	Tel. +39 0471 285446 info@thurnhof.com	
	www.thurnhof.com	

8	ROTTENSTEINER	A C F
Winery - Established in 1956 Neighbourhood: Gries, Bolzano		

The Rottensteiners are among South Tyrol's oldest wine-growing families. Their name itself is a homage to the local red rock in this area, the porphyry. The Rottensteiner winery is one of the largest and best organised in the city. From the very start, the winery did not only produce wine from the grapes grown across its 10 hectares, but also integrated the grapes from other 60 local growers. The company focuses on the typical traits of its wine varieties, thus enhancing Bolzano's local wines.

Total production: 450,000/year
Lagrein 30%, S. Maddalena 15%
Vineyards: 90 hectares, 10 of which belong to the estate
Store: from Monday to Friday between 8:00 and 12:00 and 14:00 and 18:00, Saturdays between 9:00 and 12:00
Bus: 1, get off at the end of Via Cadorna and then walk for 50 m to the crossroads to San Genesio

	Hans Rottensteiner Via Sarentino 1 Bolzano	
	Tel. +39 0471 282015 info@rottensteiner.wine	
	www.rottensteiner.wine	

9	MALOJER GUMMERHOF	B F
Winery and estate - Established in 1480 Neighbourhood: Villa, Bolzano		

The Gummerhof was mentioned officially for the first time in 1480. The winegrowing estate is just a stone's throw from the Portici in the heart of Bolzano in the Villa neighbourhood.

Back in the day there were as many as 57 estates in the area.

Today, the Malojer Gummerhof is a symbolic bastion of the city of wine. From the '80s onwards, the winery has been managed by Alfred and his wife Elisabeth, together with their son Urban and his wife Helena.

Total production: 100,000 bottles/year
Lagrein 25,000 bottles, S. Maddalena 35,000 bottles
Vineyards: 6 hectares belong to the estate
Store: from Monday to Wednesday between 8:00 and 13:00 and 14:30 and 22:00, Thursdays and Fridays between 8:00 and 13:00 and 14:30 and 23:00, Saturdays between 8:00 and 13:00, closed on Saturday evenings and Sundays.
The restaurant is closed at lunchtime.

Bus: 15, get off at Via S. Osvaldo, the winery is in the city centre and can be reached on foot in approx. 10 min.

	Malojer Gummerhof Via Weggenstein 3, Bolzano	
	Tel. +39 0471 972885 info@malojer.it	
	www.malojer.it	

10	HEINRICHSHOF	F
Winery and estate - Established in 1902 Neighbourhood: Villa, Bolzano		

The Heinrichshof is one of the oldest wineries in Bolzano. In 2003, Georg Oberrauch took over and integrated cutting-edge winemaking technology in the winery thus supporting the production of fine wine.

Total production: 20,000 bottles/year
Lagrein 6,000 bottles, S. Maddalena 6,000 bottles
Vineyards: 2 hectares
Store: by appointment
Bus: 15, get off at Via Beato Arrigo, then 100 m on foot

	Heinrichshof Via Beato Arrigo 30 Bolzano	
	Mobile +39 335 215595 info@kellerei-heinrichshof.it	
	www.kellerei-heinrichshof.it	

11	NUSSERHOF	E
Winery and estate - Established in 1788 Neighbourhood: Piani di Bolzano, Bolzano		

Josef Mayr-Nusser (Bolzano, 27 December 1910 - Erlangen, 24 February 1945) did not swear fealty to Hitler and paid for it with his life. Resistance has always been part of the Mayr family's DNA. After the war, they decided to defend the Nusserhof farmstead, the family residence since 1788, from growing urbanisation.

It is a green and environmental estate which has made of biodiversity its hallmark since 1994. It also represents a haven for musicians and artists.

Total production: 16,000 bottles/year
Lagrein 8,000 bottles, Lagrein Kretzer 2,000/bottles
Vineyards: 4 hectares
Store: by appointment only

Bus: 6, get off at the Campiglio bridge coming from the artisanal zone to the right next to the bicycle path

	Nusserhof Via Mayr Nusser 72 Bolzano	
	Mobile +39 335 6207558 mayr-nusser@olmail.net	

12	MESSNERHOF	B F
Winery and estate - Established in approx. 1800 Neighbourhood: San Pietro/Dodiciville, Bolzano		

The 'Messnerhof' farmstead has been a family-run business for over a century and is one of the oldest estates in San Pietro.

The young winemaker at the head of the business has fulfilled his childhood dream: managing and overseeing each step of the wine-making process, from the placement of the vines to the bottling of the wine.

In 2019, oenologist Bernhard Pichler renovated his winery by digging below his land and creating a modern jewel just a stone's throw from Bolzano's city centre.

Total production: 18,000 bottles/year
Lagrein 6,000 bottles, Santa Maddalena 4,000 bottles
Vineyards: 2,7 hectares
Store: book your appointment from Monday to Friday
booked tours only

Bus: 12, get off at Via S. Antonio, then walk uphill for 400 m to San Pietro church

	Messnerhof Via San Pietro 7 Bolzano	
	Tel. +39 0471 977162 Mobile +39 339 4732612 info@messnerhof.net	
	www.messnerhof.net	

13	PRANZEKG	E
The Gojer Family Neighbourhood: Colle, Bolzano		

The biodynamic wine, 20,000 bottles/year
Tours by appointment only

	Mobile +39 328 4591961 www.pranzeegg.com	
--	---	--

14	EBERLEHOF	B D
Winery and estate - Established in 1312 Neighbourhood: Rencio, Bolzano		

The Eberlehof is located in the centre of the traditional Santa Maddalena vineyards next to Bolzano, and was documented as being a wine estate already back in 1312. It has belonged to the same family since 1668 and their coat of arms, depicting a scythe and a plough, is to be seen around the property. Their Santa Maddalena Classico grows on the rolling hills of Santa Maddalena, making viticulture at the Eberlehof somewhat of a centuries-old tradition, and the Zisser family pays special attention to the Classico within its wine range.

Total production: 27,000 - 31,000/year
Lagrein 7,000 bottles, S. Maddalena 20,000 bottles
Vineyards: 3 hectares
Store: only booked sales and guided tours

Bus: 8, get off at Via Brennero, then walk uphill for 500 m

	Eberlehof, Fam. Zisser Santa Maddalena di Sotto 26 Bolzano	
	Tel. +39 0471 981918 info@weigut-eberlehof.it	
	www.weigut-eberlehof.it	

15	KANDLERHOF	B D
Winery and estate - Established in 1278 Neighbourhood: Rencio, Bolzano		

This traditional winery was already known to most people in 1278 as the 'Dornhof' farmstead under the hand of Frederici Dorn. Today's name is a homage to one of its owners: Josef Anton Schloterpöck. Back in 1777 he was known as 'Kandler' ('in wleder'). Currently his son Martin and Irene Spornberger and their son Hannes manage the estate. The estate has been in the hands of the same family for 200 consecutive years: the Province of South Tyrol awarded it the title of 'listed farmstead' in 1993.

	Kandlerhof Santa Maddalena di Sotto 30 Bolzano	
	Tel. +39 0471 979393 info@kandlerhof.it	
	www.kandlerhof.it	

16	PLONERHOF	B D
Winery and estate - Established in approx. 1300 Neighbourhood: Rencio, Bolzano		

The Plonerhof estate is located in Santa Maddalena and was first established in the 13th century, while its winery is located in the heart of Bolzano. It was first called 'Ploner auf Prazöll', as Prazöll was the original name of the Santa Maddalena vineyard. The estate is among the most renowned and oldest; the art of winemaking has been perfected and handed down from one generation to the next. The grapes are processed manually by the expert hands of winegrowers to control every step in detail.

Total production: 10,000 bottles/year
Lagrein 8,000 bottles S. Maddalena 1,000 bottles
Vineyards: 2,5 hectares
Store: from Monday to Friday between 9:00 and 12:00 and 14:00 and 19:30
and by appointment

Bus: 8, get off at Via Brennero, then walk uphill for 500 m

	Plonerhof, Fam. Simon Geier Santa Maddalena di Sotto 29 Bolzano	
	Tel. +39 0471 975559 info@weigut-plonerhof.com	
	www.weigut-plonerhof.com	

17	TROGERHOF	B D
Winery and estate - Established in approx. 13th century Neighbourhood: Rencio, Bolzano		

The Trogerhof estate is right on the top of the Santa Maddalena hill. While its establishment is of uncertain origins, the farmstead has always been mentioned since the characteristic Santa Maddalena church was built in 1295. This estate is different from the others as it exclusively produces S. Maddalena. The hill is exposed to the sun on all its sides and boasts a unique view over Bolzano and the Catinaccio massif.

Total production: 40,000 bottles/year
S. Maddalena 40,000 bottles
Vineyards: 3 hectares
Store: from Monday to Friday between 8:00 and 15:00 and by appointment

	Trogerhof Santa Maddalena di Sotto 27 Bolzano	
	Tel. +39 0471 977685 info@trogerhof.it	
	www.trogerhof.it	

18	OBERMOSER	D
Winery and estate - Established in 1890 Neighbourhood: Rencio, Bolzano		

The great-great-grandfather bought this estate in 1890. From that moment on, it has been passed down to each successive son to produce the two local Bolzano wines. Thomas Rottensteiner took over in 2012 and has worked tirelessly to improve the wine. On top of that, together with other young winegrowers working on the hill, he is trying to improve the wine's positioning and distinctive traits.

Total production: 32,000 bottles/year
Lagrein 13,000 bottles, S. Maddalena 15,000 bottles
Vineyards: 3,9 hectares
Store: open every day (booking required). Parking space for cars and small coaches. Guided tours max. 15 people
Bus: 8, get off at Rencio and walk 500 m on foot uphill

	Obmoser Santa Maddalena di Sotto 35 Bolzano	
	Tel. +39 0471 325827 Mobile +39 335 6887019 info@obmoser.wine	
	www.obmoser.wine	

19	FLIEDERHOF	B D
Winery and estate - Established in 1930 Neighbourhood: Rencio, Bolzano		

The Ramoser family has been growing wine since 1930 on the charming Santa Maddalena hill. Its vineyards, which are grown and harvested naturally, face the south and 60% of them are located on a steep incline, yielding a traditional and harmonious wine. Today, winegrower Stefan Ramoser, together with his wife Astrid and son Martin - the family oenologist - works on growing vineyards in a natural way to yield high-quality wines.

Total production: 25,000 bottles/year
Lagrein 13,000 bottles, S. Maddalena 10,000 bottles
Vineyards: 3 hectares
Store: from Monday to Friday between 9:00 and 12:00 and 13:00 - 18:00

Bus: 8, get off at Via Brennero and then 500 m uphill

20	UNTERMOSERHOF	D
Winery and estate - Established in 1630 Neighbourhood: Rencio, Bolzano		

Both father and son, Georg and Florian Ramoser, oversee the estate located on the picturesque Santa Maddalena hill. The family has been making wine since 1630 on the four hectares surrounding the estate. Their Schiava takes centre stage, while the Lagrein is the result of the family's hard work and passion.

The manual labour on these steep hills and the variety of vines is demanding and requires attention to detail to achieve a maximum yield of a green harvest started decades ago. The dry and warm climate, boasting more than 300 days of sunshine a year, yields the best harvest on this hill.

Total production: 35,000 - 40,000/year
Lagrein 15,000 bottles, S. Maddalena 15,000 bottles
Vineyards: 4 hectares
Store: from Monday to Friday between 8:30 and 12:00 and 14:00 and 18:00, Saturdays between 8:30 and 12:00
Bus: 8, get off at Rencio and then 400 m uphill

	Untermoserhof Fam. Georg Ramoser Santa Maddalena di Sotto 36 Bolzano	
	Tel. +39 0471 975481 untermoserhof@olmail.net	
	www.untermoserhof.com	

21	GLÖGGLHOF	D
Winery and estate - Established in 1300 Neighbourhood: Rencio, Bolzano		

The Glögghof winery is a small family-run business in the heart of the Santa Maddalena vineyards. The Gojer family produces interesting wines from local Schiava and Lagrein vineyards as well as Pinot Bianco, Sauvignon and Kerner. Its central location and history lend strength to its vineyards' individuality, identity and character.

Total production: 60,000 bottles/year
Lagrein 13,000 bottles, S. Maddalena 22,000 bottles
Vineyards: 8,5 hectares
Store: book your appointment from Monday to Friday
Bus: 8, get off at Rencio and then walk 50 m towards the hill

	Franz Gojer Glögghof Via Rivellone 1 Bolzano	
	Tel. +39 0471 978775 info@gojer.it	
	www.gojer.it	

22	PFANNENSTIELHOF	E
Winery and estate - Established in 1561 Neighbourhood: Rencio, Bolzano		

Since 1816, the estate has been in the hands of the Pfeifers; today, it is in the care of the family's eighth generation and their two beautiful daughters. In 2019, oenologist and owner Johannes Pfeifer won the lifetime achievement award for the 'Annerl St. Magdalener Classic 2019'. The wine was considered 'a special, excellent wine which is a point of reference for the entire region.'

Total production: 45,000 bottles/year
Lagrein 20,000 bottles, S. Maddalena 25,000 bottles
Vineyards: 4 hectares
Store: wine sold at the winery
Bus: 1, get off at Via Pfannenstiel, walk for 500 m, walk below the railway underpass. Follow the yellow signs to the 'Pfannenstielhof' to reach the winery

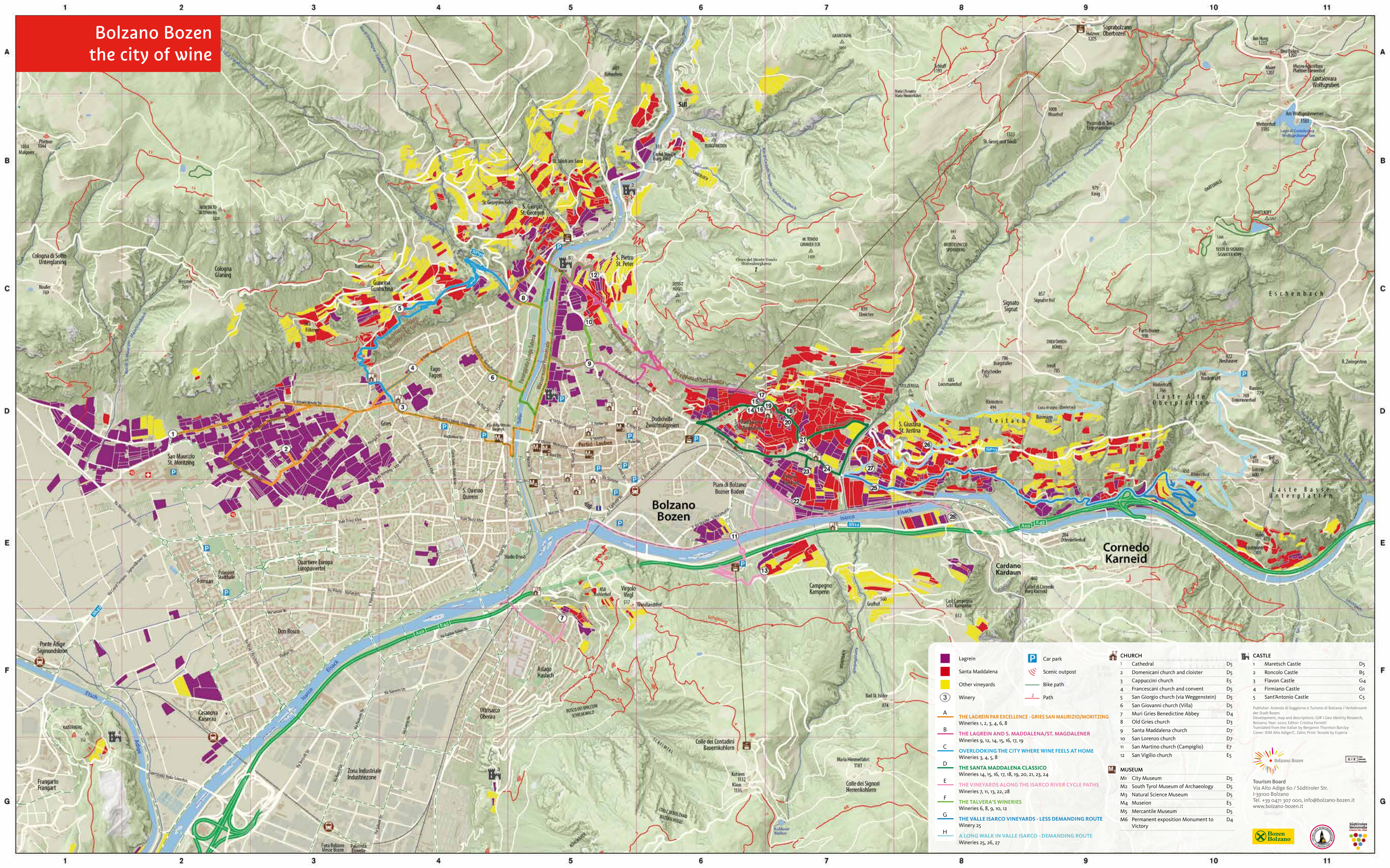
	Pfannenstielhof Via Pfannenstiel 9 Bolzano	
	Tel. +39 0471 970884 Mobile +39 339 1644258 info@pfannenstielhof.it	
	www.pfannenstielhof.it	

23	ZUNDLHOF	D
Winery and holiday farm - Established in 1975 Neighbourhood: Rencio, Bolzano		

This estate, which was turned into a holiday farmhouse in the '70s, is located in the flat part of the Rencio neighbourhood, just 1,5 km from Bolzano's old city centre. The Ramoser family inherited the land where it built its holiday farmhouse and grown its vineyards.

Total production: 10,000 bottles/year
Lagrein 2,000 bottles, S. Maddalena 5,000 bottles
Vineyards: 3,5 hectares
Store: every day, appointments only and by appointment

Bolzano Bozen the city of wine



<ul style="list-style-type: none"> Lagrein Santa Maddalena Other vineyards Winery 	<ul style="list-style-type: none"> Car park Scenic outpost Bike path Path 	<p>CHURCH</p> <table border="0"> <tr><td>1 Cathedral</td><td>D5</td></tr> <tr><td>2 Domenicani church and cloister</td><td>D5</td></tr> <tr><td>3 Cappuccini church</td><td>E5</td></tr> <tr><td>4 Franciscani church and convent</td><td>D5</td></tr> <tr><td>5 San Giorgio church (via Weggenstein)</td><td>D5</td></tr> <tr><td>6 San Giovanni church (Villa)</td><td>D5</td></tr> <tr><td>7 Muri Gries Benedictine Abbey</td><td>D4</td></tr> <tr><td>8 Old Gries church</td><td>D3</td></tr> <tr><td>9 Santa Maddalena church</td><td>D7</td></tr> <tr><td>10 San Lorenzo church</td><td>D7</td></tr> <tr><td>11 San Martino church (Campiglio)</td><td>E7</td></tr> <tr><td>12 San Vigilio church</td><td>E5</td></tr> </table>	1 Cathedral	D5	2 Domenicani church and cloister	D5	3 Cappuccini church	E5	4 Franciscani church and convent	D5	5 San Giorgio church (via Weggenstein)	D5	6 San Giovanni church (Villa)	D5	7 Muri Gries Benedictine Abbey	D4	8 Old Gries church	D3	9 Santa Maddalena church	D7	10 San Lorenzo church	D7	11 San Martino church (Campiglio)	E7	12 San Vigilio church	E5	<p>CASTLE</p> <table border="0"> <tr><td>1 Maresch Castle</td><td>D5</td></tr> <tr><td>2 Roncolo Castle</td><td>B5</td></tr> <tr><td>3 Flavon Castle</td><td>G4</td></tr> <tr><td>4 Firmiano Castle</td><td>G1</td></tr> <tr><td>5 Sant'Antonio Castle</td><td>C5</td></tr> </table>	1 Maresch Castle	D5	2 Roncolo Castle	B5	3 Flavon Castle	G4	4 Firmiano Castle	G1	5 Sant'Antonio Castle	C5
1 Cathedral	D5																																				
2 Domenicani church and cloister	D5																																				
3 Cappuccini church	E5																																				
4 Franciscani church and convent	D5																																				
5 San Giorgio church (via Weggenstein)	D5																																				
6 San Giovanni church (Villa)	D5																																				
7 Muri Gries Benedictine Abbey	D4																																				
8 Old Gries church	D3																																				
9 Santa Maddalena church	D7																																				
10 San Lorenzo church	D7																																				
11 San Martino church (Campiglio)	E7																																				
12 San Vigilio church	E5																																				
1 Maresch Castle	D5																																				
2 Roncolo Castle	B5																																				
3 Flavon Castle	G4																																				
4 Firmiano Castle	G1																																				
5 Sant'Antonio Castle	C5																																				
<p>A THE LAGREIN PAR EXCELLENCE - GRIES SAN MAURIZIO/MORITZING Wineries 1, 2, 3, 4, 6, 8</p> <p>B THE LAGREIN AND S. MADDALENA/ST. MAGDALENER Wineries 9, 12, 14, 15, 16, 17, 19</p> <p>C OVERLOOKING THE CITY WHERE WINE FEELS AT HOME Wineries 3, 4, 5, 8</p> <p>D THE SANTA MADDALENA CLASSICO Wineries 14, 15, 16, 17, 18, 19, 20, 21, 23, 24</p> <p>E THE VINEYARDS ALONG THE ISARCO RIVER CYCLE PATHS Wineries 7, 11, 13, 22, 28</p> <p>F THE TALVERA'S WINERIES Wineries 6, 8, 9, 10, 12</p> <p>G THE VALLE ISARCO VINEYARDS - LESS DEMANDING ROUTE Winery 25</p> <p>H A LONG WALK IN VALLE ISARCO - DEMANDING ROUTE Wineries 25, 26, 27</p>	<p>MUSEUM</p> <table border="0"> <tr><td>M1 City Museum</td><td>D5</td></tr> <tr><td>M2 South Tyrol Museum of Archaeology</td><td>D5</td></tr> <tr><td>M3 Natural Science Museum</td><td>D5</td></tr> <tr><td>M4 Museum</td><td>E5</td></tr> <tr><td>M5 Mercantile Museum</td><td>D5</td></tr> <tr><td>M6 Permanent exposition Monument to Victory</td><td>D4</td></tr> </table>	M1 City Museum	D5	M2 South Tyrol Museum of Archaeology	D5	M3 Natural Science Museum	D5	M4 Museum	E5	M5 Mercantile Museum	D5	M6 Permanent exposition Monument to Victory	D4	<p>Bozen Bozen</p> <p>Tourism Board Via Alto Adige 60 / Südtiroler Str. I-39100 Bolzano Tel. +39 0471 307 000, info@bolzano-bozen.it www.bolzano-bozen.it</p>																							
M1 City Museum	D5																																				
M2 South Tyrol Museum of Archaeology	D5																																				
M3 Natural Science Museum	D5																																				
M4 Museum	E5																																				
M5 Mercantile Museum	D5																																				
M6 Permanent exposition Monument to Victory	D4																																				

